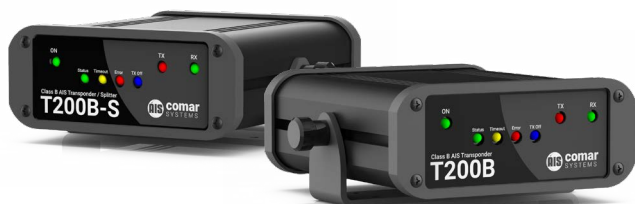


### AIS Transponders

State-of-the-art AIS Class B Transponders, including optional VHF splitter model.



### AIS Receivers

AIS receivers ideal for port and coastal monitoring, and fleet management solutions.



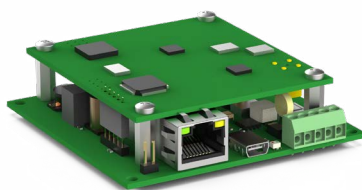
### Intelligent AIS Receivers

The most powerful and flexible AIS receivers in the market.



### OEM Receivers

Highly configurable, lightweight, dual-channel AIS receiver.



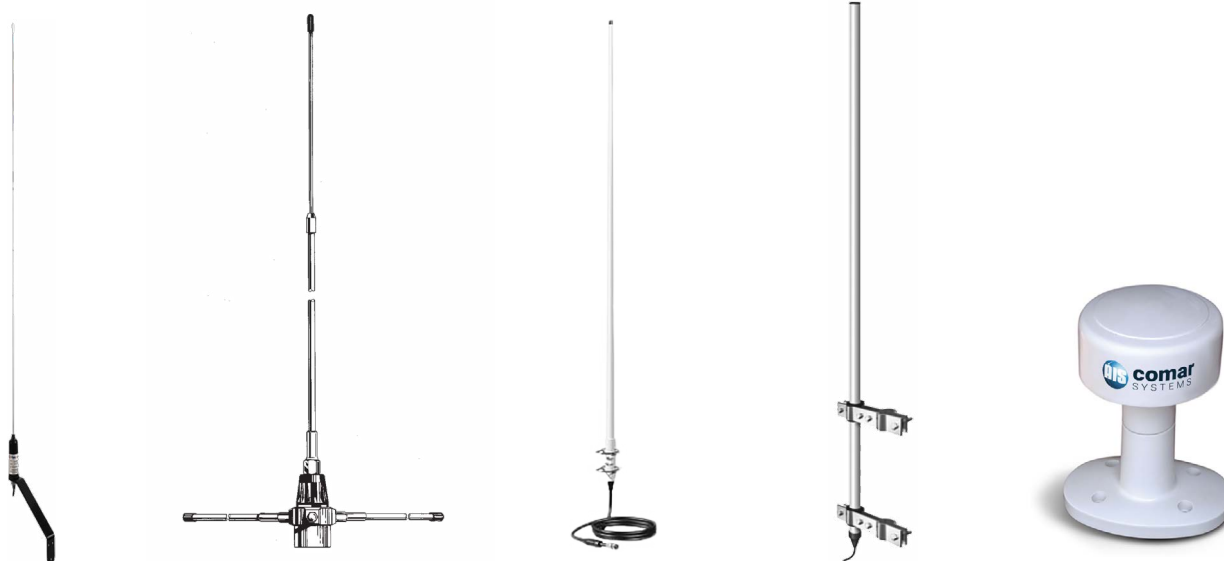
### Interfaces

Stream NMEA boating data wirelessly to your smart devices.



### Antennas / Aerials

A range of high quality VHF and GPS antennas / aerials, suited for the leisure or commercial market. Including whip, ground plane, and GRP types.



### Compass Bearing Repeaters

Compass Bearing Repeater solutions with precision dual-scale bearing repeater bowl and optional sights.



### Dial Heading Repeaters

Dial Heading repeaters provide a traditional compass card display and are easy to operate.



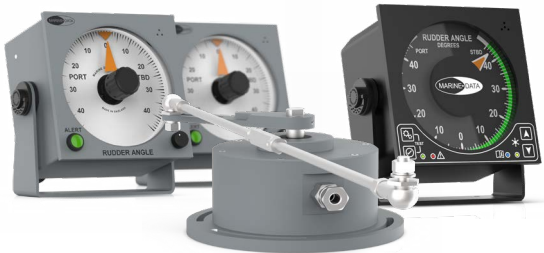
### Digital Repeaters

Digital repeater solutions provide clear and easy to read displays in digital format with LCD.



### Rudder Instrumentation

Reliable Rudder instrumentation to sense and display rudder angle



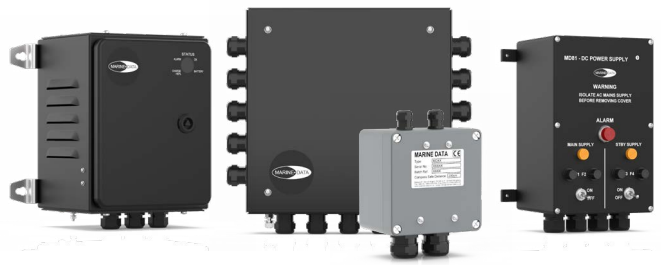
### Tape Heading Repeaters

Moving tape repeaters offer a analog moving tape display for viewing from longer distances.



### Power & Data Distribution

Power or NMEA 0183 data may be conveniently relayed to any location on a vessel



### EMC & TMC Systems

Relay data from a magnetic compass or generate heading from an Electromagnetic compass.

